



Severe Weather Tabletop Exercise

Andy Schoepf, CIC, Risk & Claims Manager

aschoepf@leeagencyinc.com

Purpose of Tabletops

To apply and test organizational policies and procedures in order to determine opportunities for improvement or enhancement of the plans.

Why Are We Here?

This exercise gives participants the opportunity to evaluate current response concepts, plans and responsibilities, should the need arise to respond to an incident. This exercise will focus on internal and external communication, critical decisions and the coordination of assets necessary to save lives and protect your community.

Focus Capabilities

- 1) Communication across the organization
- 2) Utilization of the Incident Command System
- 3) Business Continuity
 - Decision to shelter-in-place vs. evacuate

Objectives

- 1) Efficient and effective internal and external communication – knowing who is responsible for what and able to get it done quickly
- 2) Incident Command system is in place and is an effective decision-making and communication tool
- 3) The decision to evacuate vs. shelter-in-place happens quickly and follows the pre-determined criteria and guidelines

Exercise Rules

- 1) This is a facilitated tabletop exercise. Players will respond to the given scenario. In any exercise, a number of assumptions and “made up stuff” may be necessary to complete play in the time allotted.
- 2) This is meant to be a plausible scenario with events occurring as presented. There are no hidden agendas or trick questions.
- 3) Don't beat up the scenario.

Questions to keep in mind...

- 1) Who?
- 2) What?
- 3) When?
- 4) How do you know?/Where is it documented?

Here we go...

Scenario

It is Wednesday, June 20th. There are severe storms forecast for Friday, followed by an extreme heatwave.

- What should your staff be doing?
- What are your conversation topics?
- What considerations/preparations are being made?
- What does your plan say?

Inject 1

It is Friday, June 22nd:

1pm – Tornado watch in effect from 3pm to 9pm

- What should your staff be doing?
- What are your conversation topics?
- What considerations/preparations are being made?
- What does your plan say?

4pm – Tornado warning/sirens sound

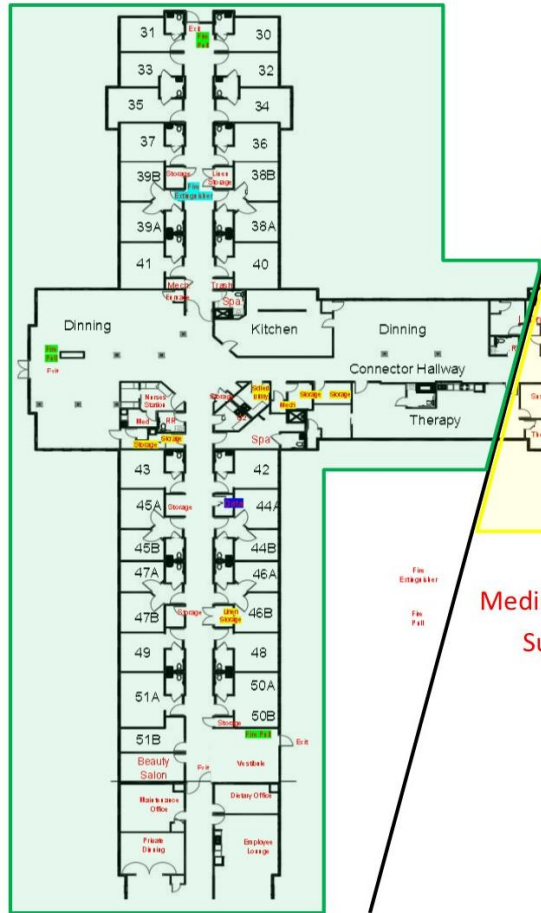
4:30pm – Tornado Approaches



Example Building Diagram

Minor Damage Sustained

- Minor broken windows, roof damage, etc,

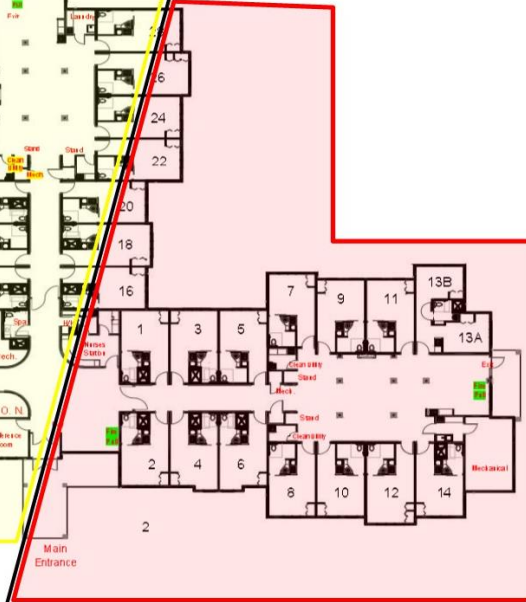


Medium Damage Sustained



Major Damage Sustained

- Partial roof collapse
- Significant structural damage
- Broken windows, debris, water damage, etc



Inject 1

4:40pm – Immediate Assessment:

- Significant damage to Wing 1, Main Entrance, and part of Wing 2
- Significant roof and structural damage, broken windows, lights/electricity out, branches/trees down furniture, other fixtures and debris strewn about
- Medium damage to most of Wing 2 as well as the main mechanical room – holes in roof, water damage and broken windows
 - Multiple injuries to residents and staff

Questions to Consider

- What decisions need to be made?
- How do you know?
- Who is responsible for what?

Inject 2

5pm

- Two resident fatalities, eight critically injured
- One staff fatality, three injured and one unaccounted for

Inject 3

5:15pm

- Reporter arrives to shoot footage/interviews
- Families and volunteers arrive to help

* Remember the forecast?

Now What?

- What did you learn?
- What went well?
- Opportunities for improvement?
- Define and prioritize next steps (after-action report)

Thanks!

